

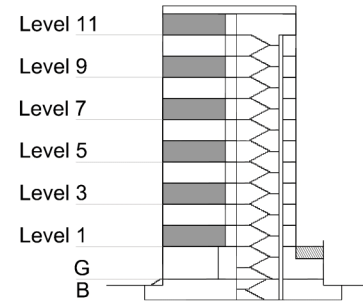
# TYPE 2 - GATEWAY BUILDING

## ONE BEDROOM APARTMENT

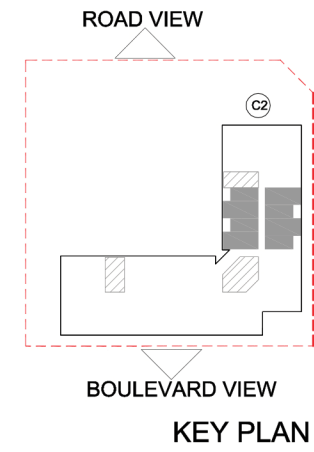
### Variation 1

Net Area = 74.1 sq.m (798.8 sq.ft)  
 Balcony Area = 7.9 sq.m (84.8 sq.ft)  
 Total Area = 82.0 sq.m (882.9 sq.ft)

OCCURS IN GATEWAY FLOOR PLAN V1 & V2



KEY SECTION - C2



KEY PLAN

