

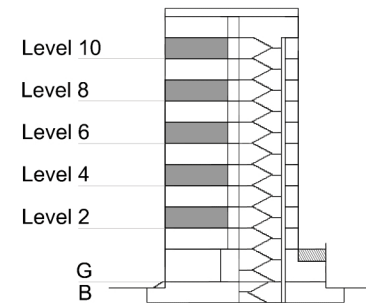
TYPE 2 - GATEWAY BUILDING

TWO BEDROOM APARTMENT

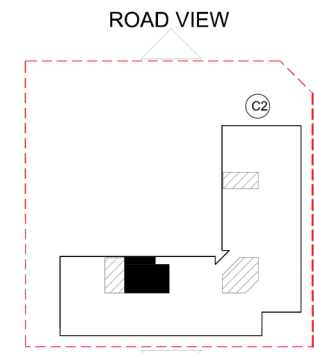
Middle Unit - Variation 2B

Net Area = 109.3 sq.m (1176.9 sq.ft)
 Balcony Area = 7.0 sq.m (75.7 sq.ft)
 Total Area = 116.4 sq.m (1252.6 sq.ft)

OCCURS IN GATEWAY FLOOR PLAN V2



KEY SECTION - C2



KEY PLAN

