

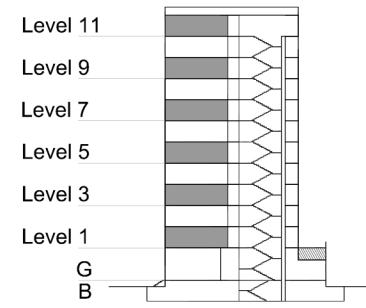
# TYPE 2 - GATEWAY BUILDING

## THREE BEDROOM APARTMENT

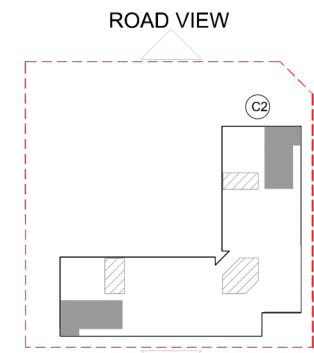
### Variation 1

Net Area = 140.1 sq.m (1507.5 sq.ft)  
 Balcony Area = 6.9 sq.m (73.8 sq.ft)  
 Total Area = 146.9 sq.m (1581.3 sq.ft)

OCCURS IN GATEWAY FLOOR PLAN V1



KEY SECTION - C2



BOULEVARD VIEW

KEY PLAN

