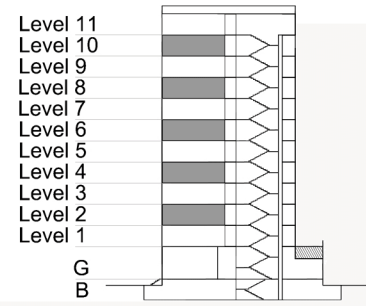


TYPE 2 - GATEWAY BUILDING

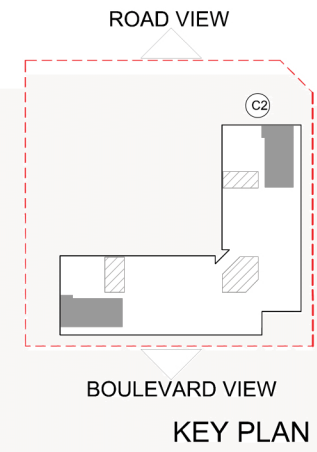
THREE BEDROOM APARTMENT

Variation 2

Net Area = 133.0 sq.m (1431.6 sq.ft)
 Balcony Area = 9.7 sq.m (104.7 sq.ft)
 Total Area = 142.7 sq.m (1536.3 sq.ft)



KEY SECTION - C2



OCCURS IN GATEWAY FLOOR PLAN V1 AND V2

