

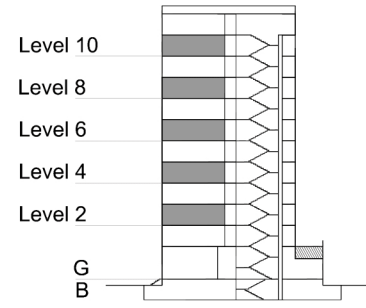
# TYPE 2 - GATEWAY BUILDING

## THREE BEDROOM APARTMENT

### Variation 3

Net Area = 133.1 sq.m (1432.7 sq.ft)  
 Balcony Area = 16.8 sq.m (180.7 sq.ft)  
 Total Area = 149.9 sq.m (1613.4 sq.ft)

OCCURS IN GATEWAY FLOOR PLAN V2



KEY SECTION - C2

