

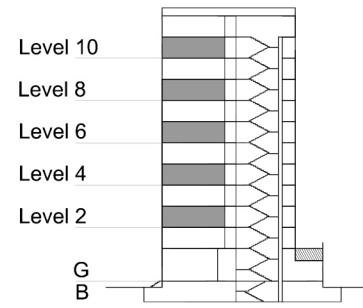
TYPE 2 - GATEWAY BUILDING ONE BEDROOM APARTMENT Variation 2

Net Area = 64.7 sq.m (696.3 sq.ft)

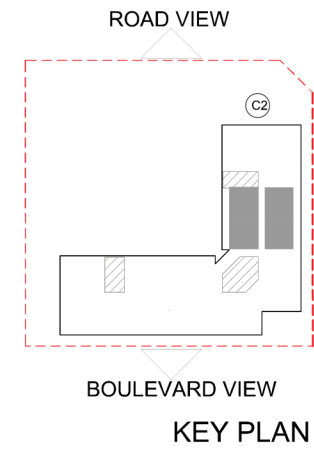
Balcony Area = 9.3 sq.m (100.1 sq.ft)

Total Area = 74.0 sq.m (796.4 sq.ft)

OCCURS IN GATEWAY FLOOR PLAN V2



KEY SECTION - C2



PARCEL 4 - KEY PLAN

