

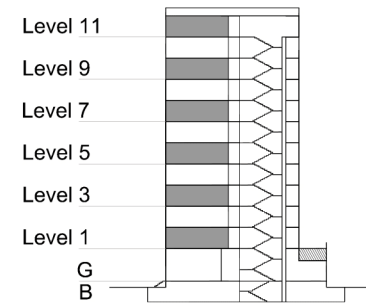
TYPE 2 - GATEWAY BUILDING

TWO BEDROOM APARTMENT

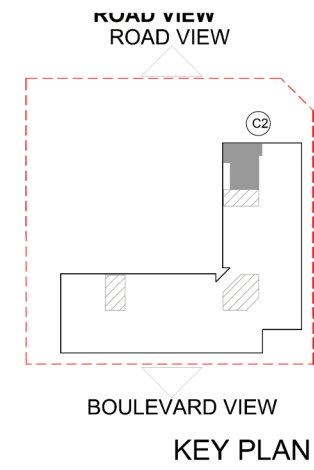
End Unit - Variation 1A

Net Area = 112.9 sq.m (1214.8 sq.ft)
 Balcony Area = 9.3 sq.m (100.2 sq.ft)
 Total Area = 122.2 sq.m (1315.0 sq.ft)

OCCURS IN GATEWAY FLOOR PLAN V1



KEY SECTION - C2



KEY PLAN

