

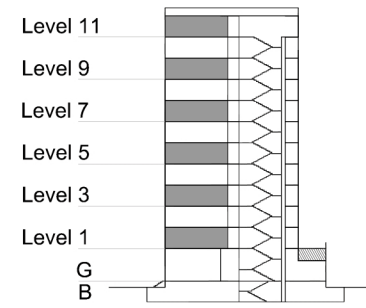
# TYPE 2 - GATEWAY BUILDING

## TWO BEDROOM APARTMENT

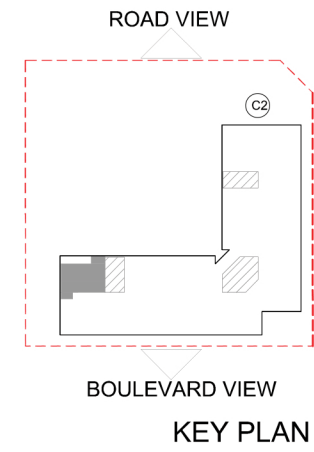
### End Unit - Variation 1B

Net Area = 107.5 sq.m (1157.6 sq.ft)  
 Balcony Area = 9.7 sq.m (104.1 sq.ft)  
 Total Area = 117.2 sq.m (1261.6 sq.ft)

OCCURS IN GATEWAY FLOOR PLAN V1



KEY SECTION - C2



PARCEL 4 - KEY PLAN

