

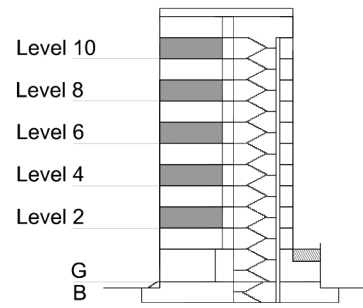
TYPE 2 - GATEWAY BUILDING

TWO BEDROOM APARTMENT

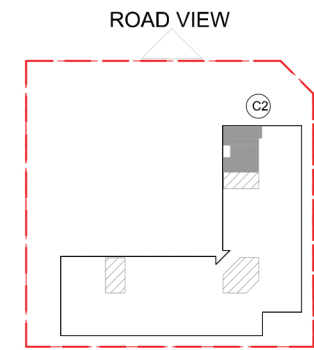
End Unit - Variation 2A

Net Area = 120.0 sq.m (1291.9 sq.ft)
 Balcony Area = 6.8 sq.m (73.3 sq.ft)
 Total Area = 126.8 sq.m (1365.2 sq.ft)

OCCURS IN GATEWAY FLOOR PLAN V2



KEY SECTION - C2



BOULEVARD VIEW

KEY PLAN

