

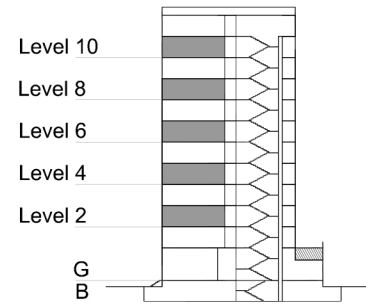
TYPE 2 - GATEWAY BUILDING

TWO BEDROOM APARTMENT

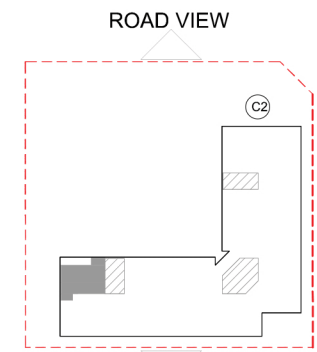
End Unit - Variation 2B

Net Area = 114.8 sq.m (1235.4 sq.ft)
 Balcony Area = 7.2 sq.m (77.2 sq.ft)
 Total Area = 121.9 sq.m (1312.6 sq.ft)

OCCURS IN GATEWAY FLOOR PLAN V2



KEY SECTION - C2



KEY PLAN

