

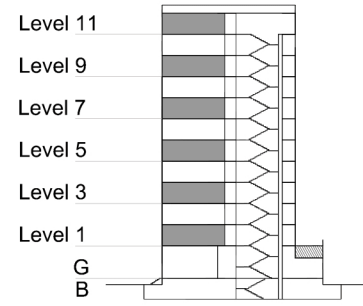
# TYPE 2 - GATEWAY BUILDING

## TWO BEDROOM APARTMENT

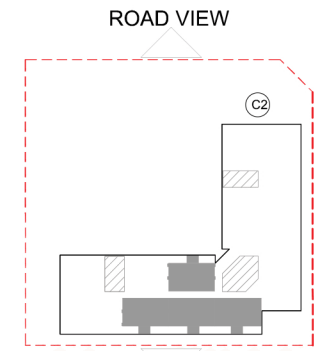
### Middle Unit - Variation 1A

Net Area = 106.8 sq.m (1149.4 sq.ft)  
 Balcony Area = 8.2 sq.m (88.7 sq.ft)  
 Total Area = 115.0 sq.m (1238.1 sq.ft)

OCCURS IN GATEWAY FLOOR PLAN V1



KEY SECTION - C2



KEY PLAN

