

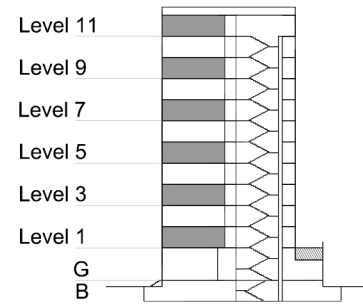
TYPE 2 - GATEWAY BUILDING

TWO BEDROOM APARTMENT

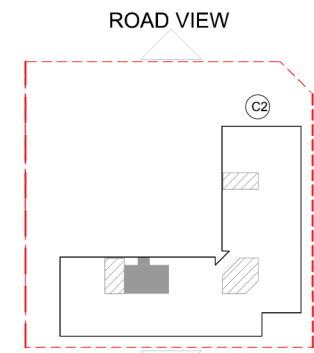
Middle Unit - Variation 1B

Net Area = 102.6 sq.m (1104.5 sq.ft)
 Balcony Area = 7.2 sq.m (77.1 sq.ft)
 Total Area = 109.8 sq.m (1181.6 sq.ft)

OCCURS IN GATEWAY FLOOR PLAN V1



KEY SECTION - C2



KEY PLAN

