

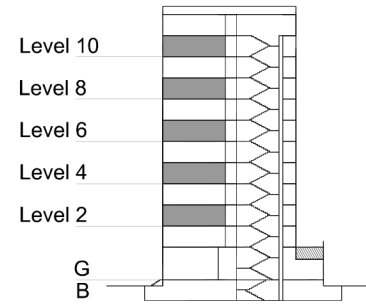
# TYPE 2 - GATEWAY BUILDING

## TWO BEDROOM APARTMENT

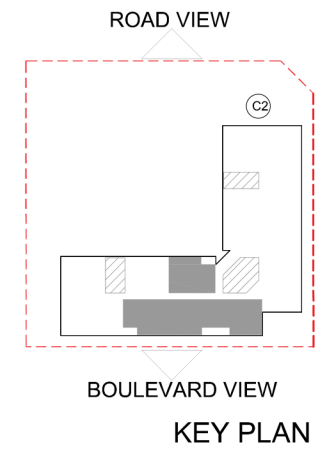
### Middle Unit - Variation 2A

Net Area = 115.0 sq.m (1237.9 sq.ft)  
 Balcony Area = 6.9 sq.m (74.1 sq.ft)  
 Total Area = 121.9 sq.m (1311.9 sq.ft)

OCCURS IN GATEWAY FLOOR PLAN V2



KEY SECTION - C2



KEY PLAN

