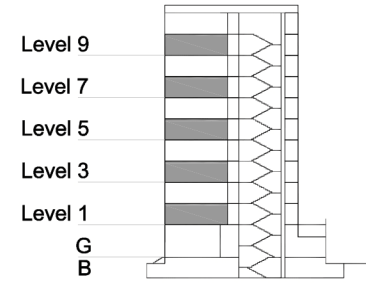


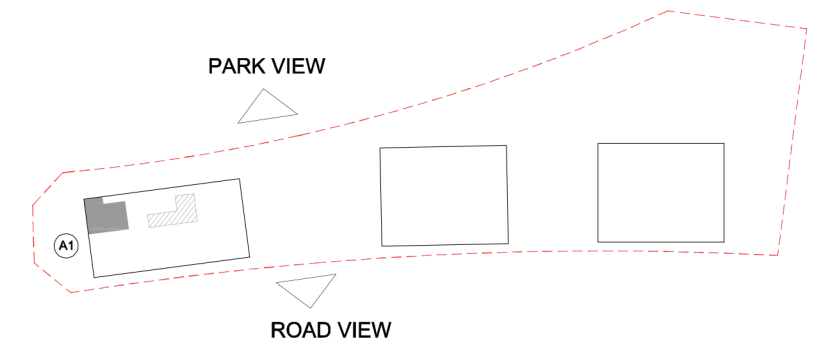
# TYPE 2 - ANCHOR BUILDING ONE BEDROOM APARTMENT Variation 1

Net Area = 77.6 sq.m (835.8 sq.ft)  
Balcony Area = 7.9 sq.m (84.9 sq.ft)  
Total Area = 85.5 sq.m (920.7 sq.ft)

OCCURS IN TYPICAL FLOOR PLAN AV1



KEY SECTION - A1



KEY PLAN

