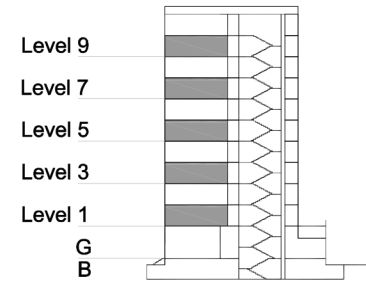


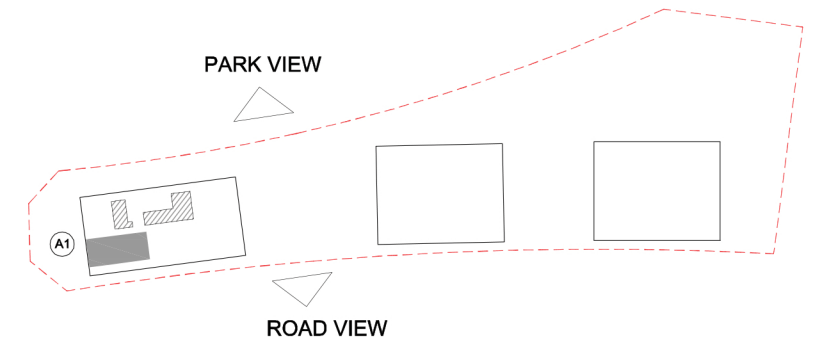
# TYPE 2 - ANCHOR BUILDING THREE BEDROOM APARTMENT Variation 4

Net Area = 142.0 sq.m (1528.8 sq.ft)  
Balcony Area = 6.9 sq.m (73.8 sq.ft)  
Total Area = 148.9 sq.m (1602.7 sq.ft)

OCCURS IN TYPICAL FLOOR PLAN AV1



KEY SECTION - A1



KEY PLAN

