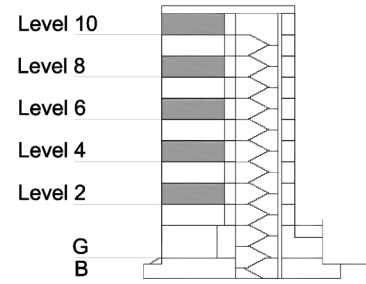


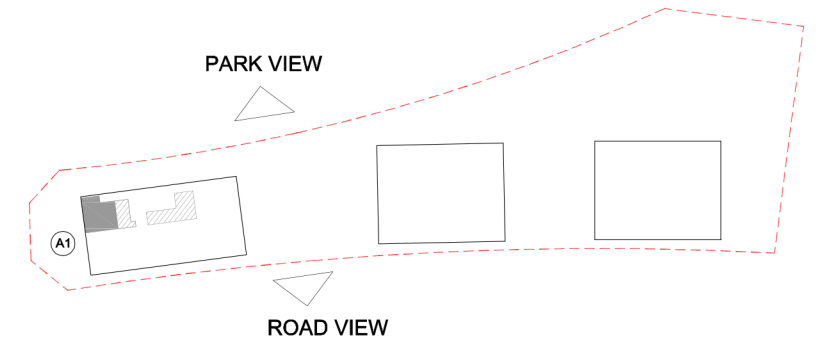
TYPE 2 - ANCHOR BUILDING ONE BEDROOM APARTMENT Variation 2

Net Area = 67.4 sq.m (725.4 sq.ft)
Balcony Area = 10.1 sq.m (108.7 sq.ft)
Total Area = 77.5 sq.m (834.0 sq.ft)

OCCURS IN TYPICAL FLOOR PLAN AV2



KEY SECTION - A1



KEY PLAN

