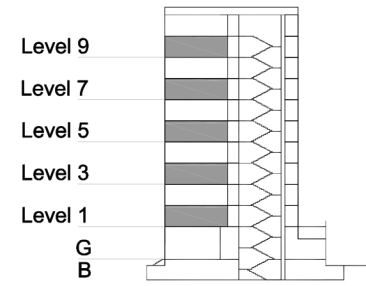


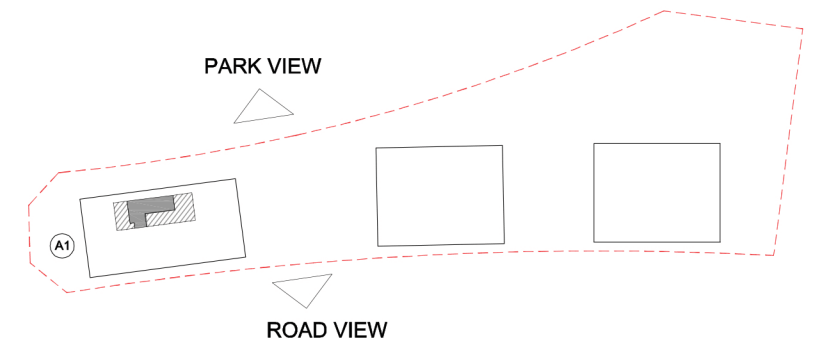
TYPE 2 - ANCHOR BUILDING ONE BEDROOM APARTMENT Variation 3

Net Area = 68.3 sq.m (735.1 sq.ft)
Balcony Area = 9.7 sq.m (104.6 sq.ft)
Total Area = 78.0 sq.m (839.8 sq.ft)

OCCURS IN TYPICAL FLOOR PLAN AV1



KEY SECTION - A1



KEY PLAN

