

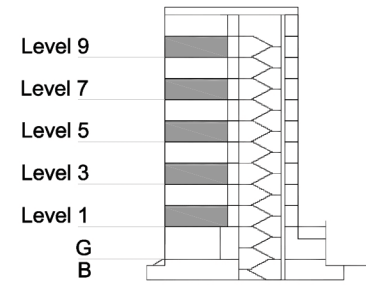
# TYPE 2 - ANCHOR BUILDING

## TWO BEDROOM APARTMENT

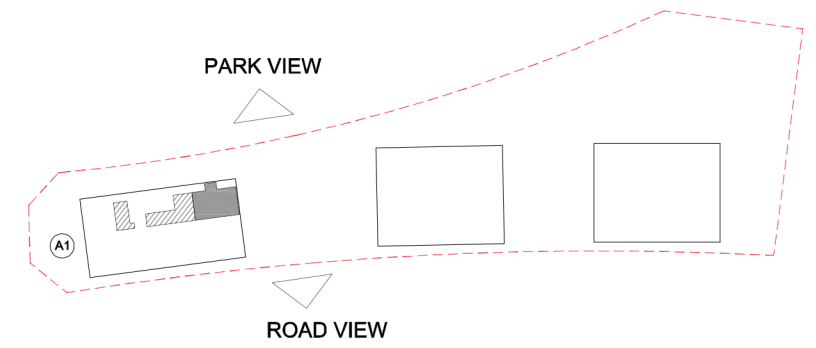
### Middle Unit - Variation 1B

Net Area = 103.7 sq.m (1116.5 sq.ft)  
 Balcony Area = 7.2 sq.m (77.1 sq.ft)  
 Total Area = 110.9 sq.m (1193.5 sq.ft)

OCCURS IN TYPICAL FLOOR PLAN AV1



KEY SECTION - A1



KEY PLAN

