

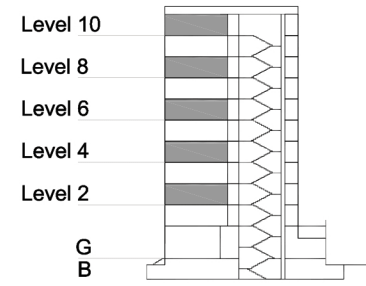
TYPE 2 - ANCHOR BUILDING

TWO BEDROOM APARTMENT

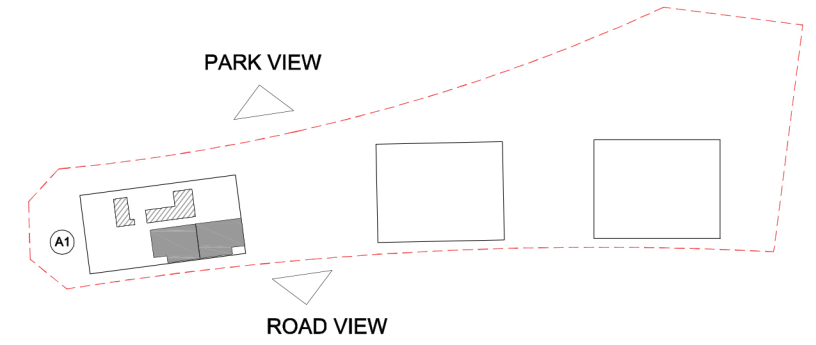
Middle Unit - Variation 2A

Net Area = 115.1 sq.m (1238.9 sq.ft)
 Balcony Area = 6.9 sq.m (74.1 sq.ft)
 Total Area = 122.0 sq.m (1313.0 sq.ft)

OCCURS IN TYPICAL FLOOR PLAN AV2



KEY SECTION - A1



KEY PLAN

