

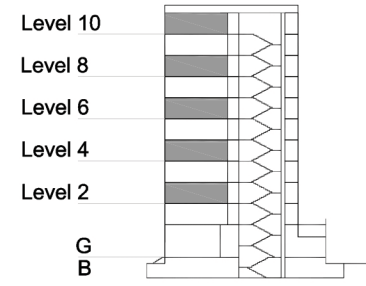
TYPE 2 - ANCHOR BUILDING

TWO BEDROOM APARTMENT

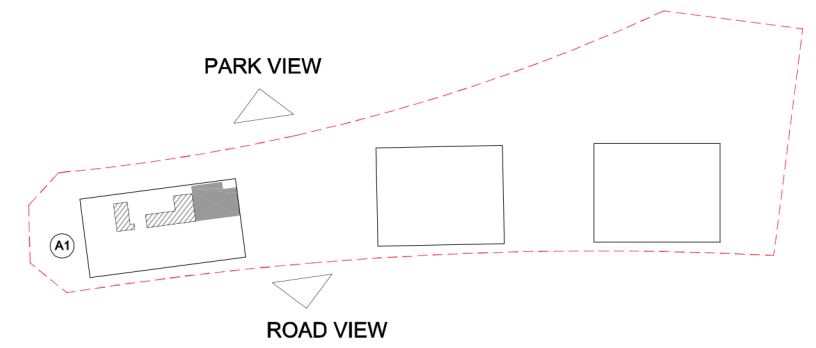
Middle Unit Variation 2B

Net Area = 110.5 sq.m (1189.2 sq.ft)
 Balcony Area = 7.5 sq.m (80.3 sq.ft)
 Total Area = 117.9 sq.m (1269.4 sq.ft)

OCCURS IN TYPICAL FLOOR PLAN AV2



KEY SECTION - A1



KEY PLAN

