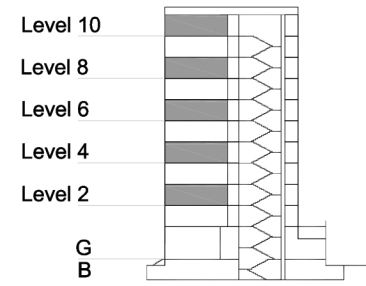


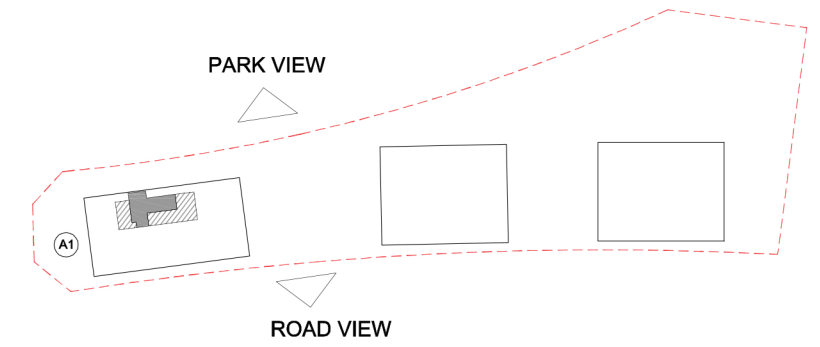
TYPE 2 - ANCHOR BUILDING TWO BEDROOM APARTMENT Variation 3

Net Area = 75.5 sq.m (813.1 sq.ft)
Balcony Area = 6.9 sq.m (74.2 sq.ft)
Total Area = 82.4 sq.m (887.3 sq.ft)

OCCURS IN TYPICAL FLOOR PLAN AV2



KEY SECTION - A1



KEY PLAN

