

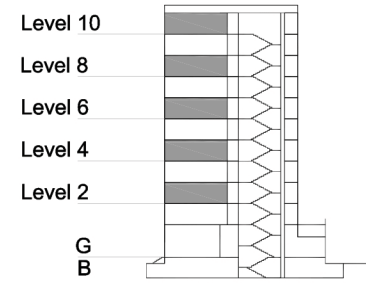
TYPE 2 - ANCHOR BUILDING

THREE BEDROOM APARTMENT

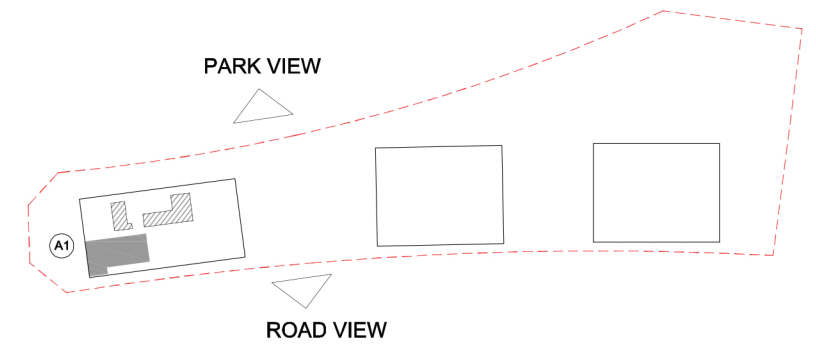
Variation 1

Net Area = 130.9 sq.m (1408.8 sq.ft)
 Balcony Area = 17.5 sq.m (188.7 sq.ft)
 Total Area = 148.4 sq.m (1597.5 sq.ft)

OCCURS IN TYPICAL FLOOR PLAN AV2



KEY SECTION - A1



KEY PLAN

