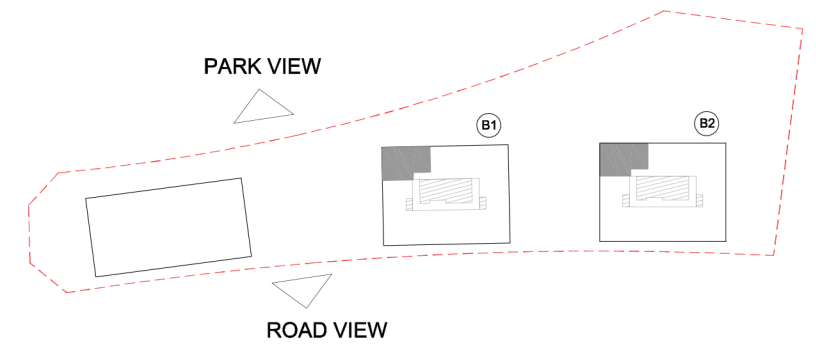
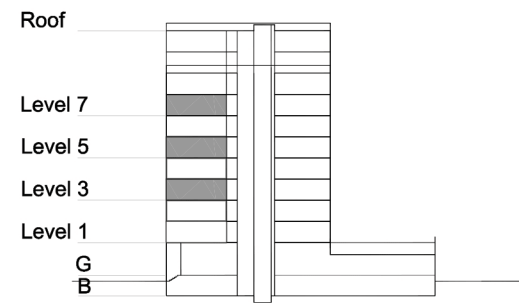


TYPE 1 - STANDARD BUILDING TWO BEDROOM APARTMENT Variation 3

Net Area = 103.1 sq.m (1109.9 sq.ft)
Balcony Area = 6.5 sq.m (69.4 sq.ft)
Total Area = 109.6 sq.m (1179.3 sq.ft)

OCCURS IN TYPICAL FLOOR PLAN AV1



KEY PLAN

