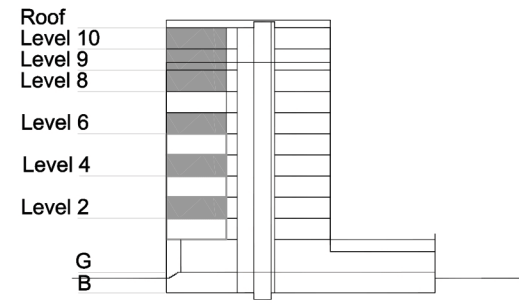


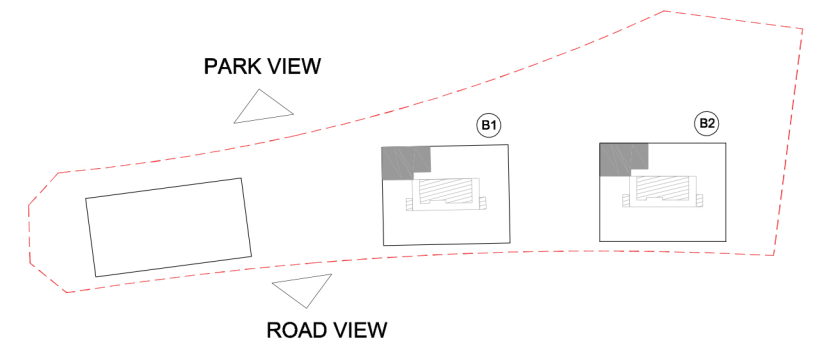
TYPE 1 - STANDARD BUILDING TWO BEDROOM APARTMENT Variation 4

Net Area = 95.6 sq.m (1028.7 sq.ft)
Balcony Area = 6.5 sq.m (69.6 sq.ft)
Total Area = 102.0 sq.m (1098.4 sq.ft)

OCCURS IN TYPICAL FLOOR PLAN AV2 & B



KEY SECTION - B1/B2



KEY PLAN

