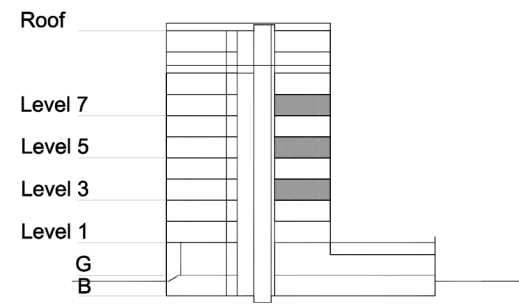


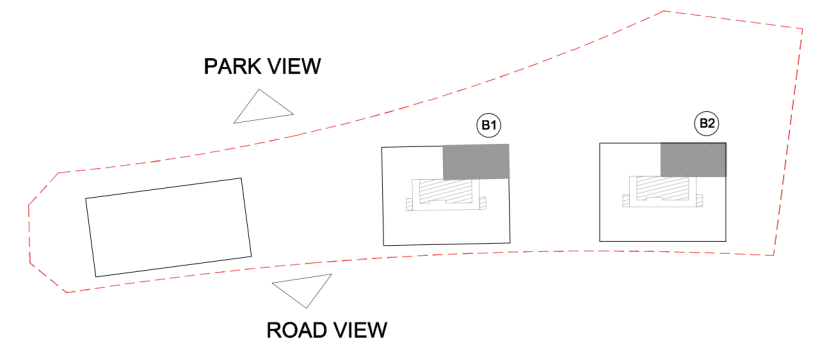
TYPE 1 - STANDARD BUILDING THREE BEDROOM APARTMENT Variation 1

Net Area = 132.4 sq.m (1425.6 sq.ft)
Balcony Area = 5.8 sq.m (62.8 sq.ft)
Total Area = 138.3 sq.m (1488.4 sq.ft)

OCCURS IN TYPICAL FLOOR PLAN AV1



KEY SECTION - B1/B2



KEY PLAN

