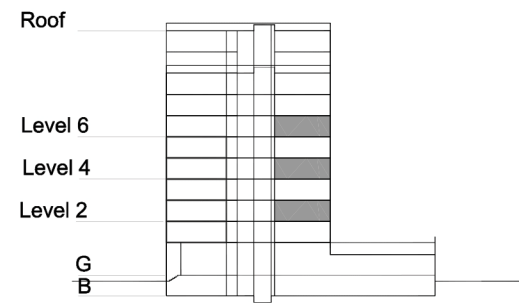


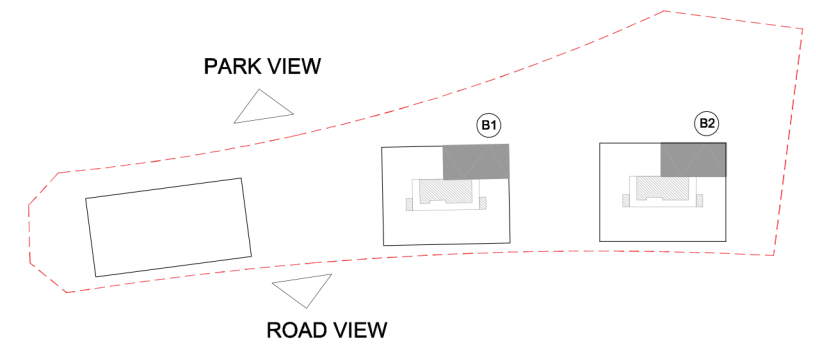
TYPE 1 - STANDARD BUILDING THREE BEDROOM APARTMENT Variation 2

Net Area = 132.4 sq.m (1425.6 sq.ft)
Balcony Area = 6.7 sq.m (72.4 sq.ft)
Total Area = 139.2 sq.m (1498.0 sq.ft)

OCCURS IN TYPICAL FLOOR PLAN AV2



KEY SECTION - B1/B2



KEY PLAN

