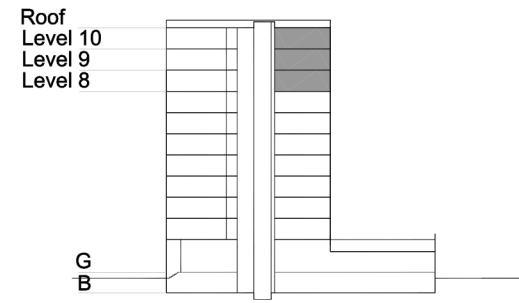


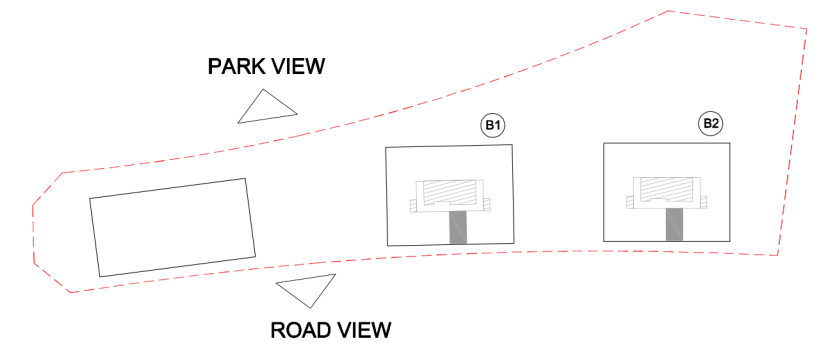
TYPE 1 - STANDARD BUILDING STUDIO Variation 2

Net Area = 30.6 sq.m (329.8 sq.ft)
Balcony Area = 7.2 sq.m (77.7 sq.ft)
Total Area = 37.9 sq.m (407.5 sq.ft)

OCCURS IN TYPICAL FLOOR PLAN B



KEY SECTION - B1/B2



KEY PLAN

