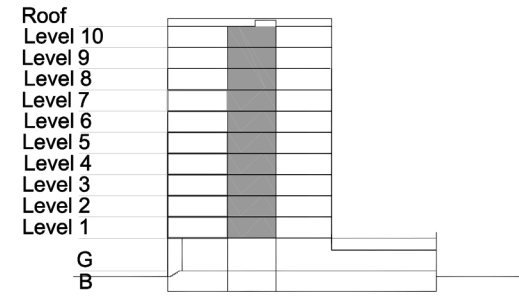


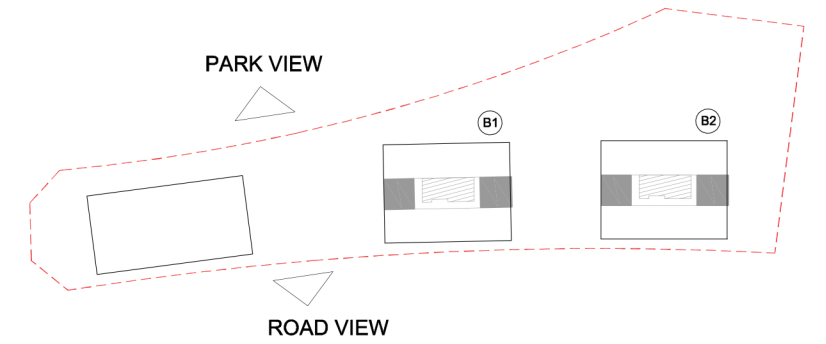
# TYPE 1 - STANDARD BUILDING ONE BEDROOM APARTMENT Variation 1

Net Area = 62.7 sq.m (674.8 sq.ft)  
Balcony Area = 0.0 sq.m (0.0 sq.ft)  
Total Area = 62.7 sq.m (674.8 sq.ft)

OCCURS IN TYPICAL FLOOR PLAN AV1 & AV2 & B



KEY SECTION - B1/B2



KEY PLAN

