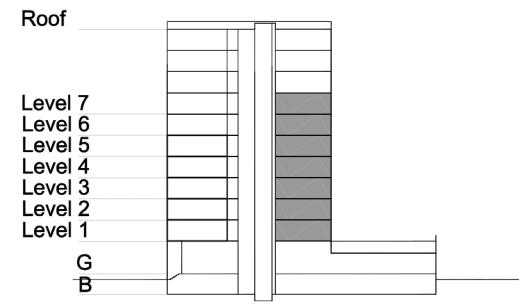


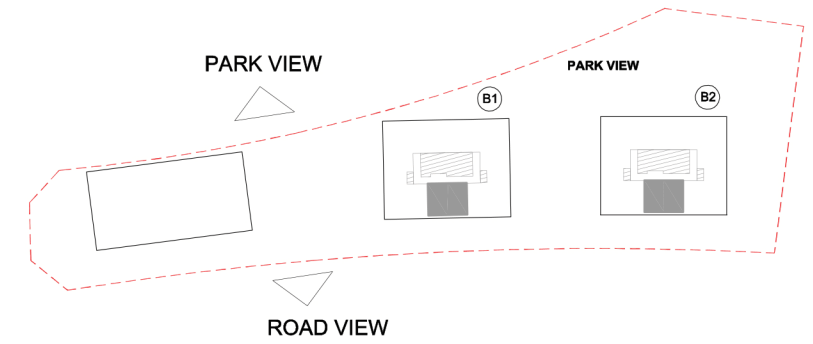
# TYPE 1 - STANDARD BUILDING ONE BEDROOM APARTMENT Variation 2

Net Area = 61.1 sq.m (657.9 sq.ft)  
Balcony Area = 7.3 sq.m (78.1 sq.ft)  
Total Area = 68.4 sq.m (736.0 sq.ft)

OCCURS IN TYPICAL FLOOR PLAN AV1 & AV2



KEY SECTION - B1/B2



KEY PLAN

