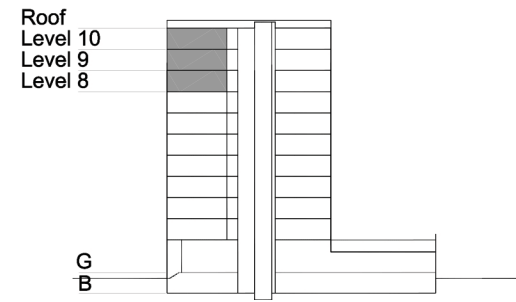


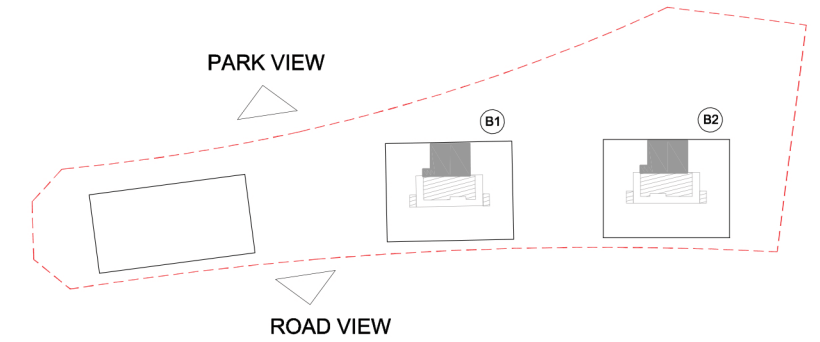
TYPE 1 - STANDARD BUILDING ONE BEDROOM APARTMENT Variation 3

Net Area = 62.7 sq.m (675.1 sq.ft)
Balcony Area = 7.9 sq.m (85.3 sq.ft)
Total Area = 70.6 sq.m (760.4 sq.ft)

OCCURS IN TYPICAL FLOOR PLAN B



KEY SECTION - B1/B2



KEY PLAN

