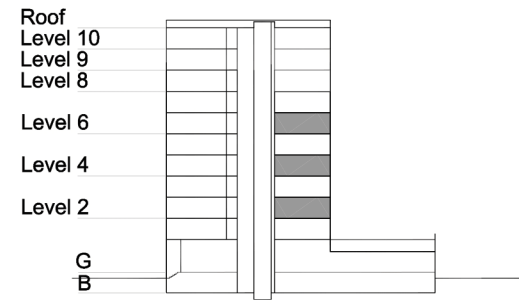


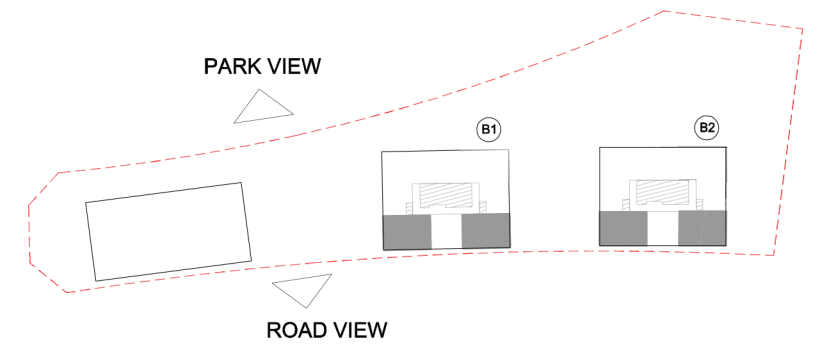
# TYPE 1 - STANDARD BUILDING TWO BEDROOM APARTMENT Variation 1

Net Area = 102.7 sq.m (1105.1 sq.ft)  
Balcony Area = 5.9 sq.m (63.7 sq.ft)  
Total Area = 108.6 sq.m (1168.8 sq.ft)

OCCURS IN TYPICAL FLOOR PLAN AV2 & B



KEY SECTION - B1/B2



KEY PLAN

