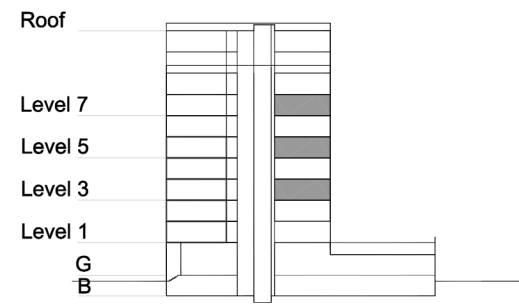


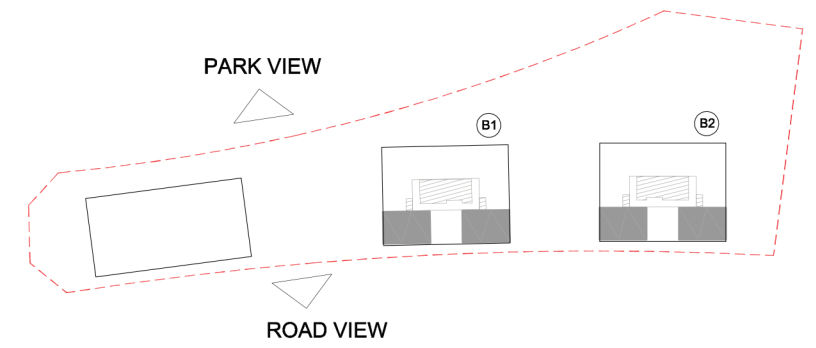
# TYPE 1 - STANDARD BUILDING TWO BEDROOM APARTMENT Variation 2

Net Area = 102.7 sq.m (1105.1 sq.ft)  
Balcony Area = 13.6 sq.m (146.0 sq.ft)  
Total Area = 116.2 sq.m (1251.1 sq.ft)

OCCURS IN TYPICAL FLOOR PLAN AV1



KEY SECTION - B1/B2



KEY PLAN

