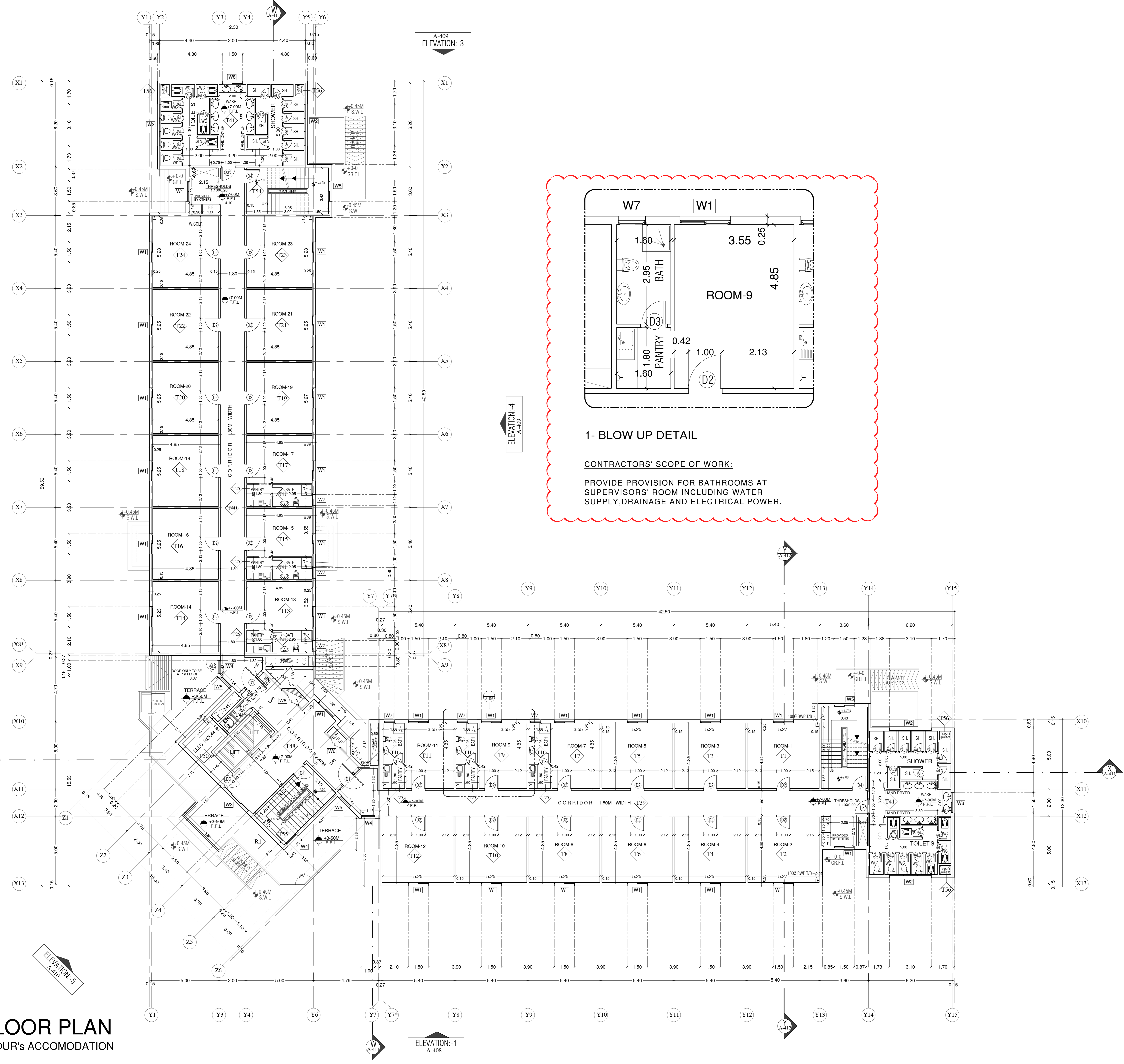


TYPICAL FLOOR PLAN

LABOUR'S ACCOMMODATION



1- BLOW UP DETAIL

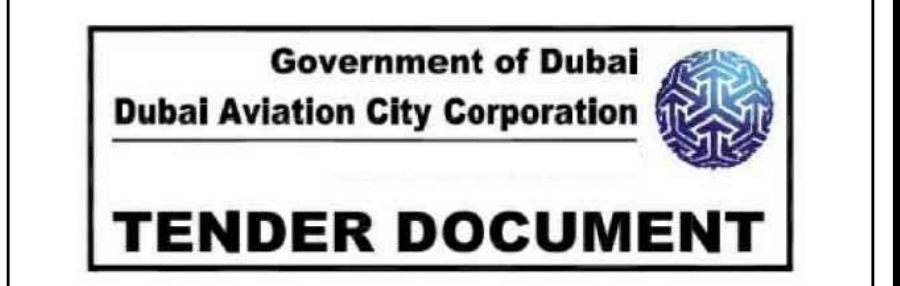
CONTRACTORS' SCOPE OF WORK:
 PROVIDE PROVISION FOR BATHROOMS AT SUPERVISORS' ROOM INCLUDING WATER SUPPLY, DRAINAGE AND ELECTRICAL POWER.

- GENERAL NOTES:**
1. THIS DRAWING IS A COPYRIGHT.
 2. DIMENSIONS ARE NOT TO BE SCALED FROM THIS DRAWING.
 3. THE CONTRACTOR AND HIS SUBCONTRACTORS ARE TO VERIFY ALL DIMENSIONS ON SITE BEFORE MAKING ANY SHOP DRAWINGS AND BEFORE EXECUTING THE WORKS.
 4. ANY DISCREPANCIES, EITHER BETWEEN WRITTEN DIMENSIONS AND SITE DIMENSIONS OR BETWEEN THIS DRAWING AND OTHER CONSULTANTS OR SUPPLIERS DRAWINGS SHOULD BE BROUGHT TO THE IMMEDIATE ATTENTION OF THE ARCHITECT BEFORE EXECUTING THE WORKS.
 5. THIS DRAWING IS TO BE READ IN CONJUNCTION WITH THE RELEVANT STRUCTURAL, MECHANICAL, AND ELECTRICAL DRAWINGS.
 6. ALL WORKS ARE TO BE CARRIED OUT IN ACCORDANCE WITH THE RELEVANT B.S. AND CODES OF PRACTICE AND ALSO TO MEET THE LOCAL AUTHORITY REQUIREMENTS.

- LIST OF CHANGES:**
1. RELOCATION OF SITTING HALL.
 2. BATHROOMS PROVISION FOR SUPERVISORS' ROOMS.
 3. PARAPPET HEIGHT CHANGED.
 4. RENUMBERING OF ROOMS.

ARCHITECTURAL LEGENDS/ABBREVIATIONS, SYMBOL

	SECTION MARKING & SHEET NOS.
	REFERENCE ELEVATION MARKING
	WINDOW REFERENCE
	DOOR REFERENCE
	OPENING REFERENCE
	GROUND FINISH FLOOR LEVEL
	SIDE WALK LEVEL
	GATE LEVEL
	UP RAMP DIRECTION
	COLUMN REFERENCE GRID
	START UP INDICATED
	UP MARKING
	STRUCTURAL OPENING
	INTERNAL FINISH MARKING
	FIRE FIGHTING CABINET WITH HINGED WINDOW, SINGLE & GLAZING 6mm THK.

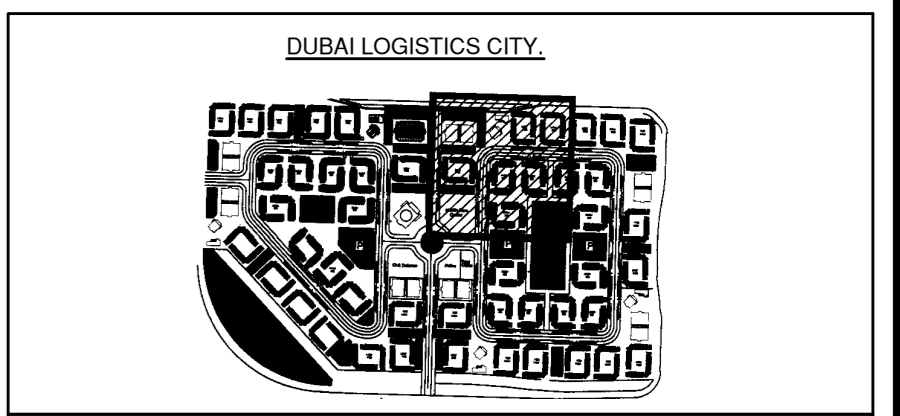
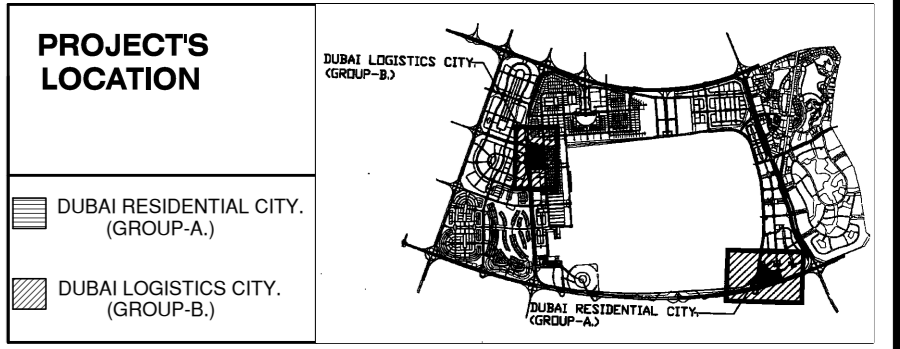


REV. NO.	DATE	DESCRIPTION	BY	CHECK
01	14-OCT-2015	TENDER DRAWINGS	FM	A.SAAD



PROJECT NAME
 STAFF VILLAGE AT DUBAI LOGISTIC CITY
 PHASE-1 PACKAGE A
 10 (nos) LABOUR ACCOMMODATION BUILDINGS

CONTRACT NO.
 RFP / Contract Number 073 / 2015



dwg. title

TYPICAL FLOOR PLAN
LABOUR ACCOMMODATION

Scale	N.T.S	date	OCTOBER, 2015
chk engg	: A SAAD	draft	: FIROSE
drawing type.	ARCHITECTURAL	drawing no.	
proj. no.		sheet no.	122

ref : DS/DS/POE-ST/001/A-405